



CardioRespiratory Acute Skills in Hospitals

Do you want to build knowledge and confidence in the following areas?

- Compare the pathways and trajectories of cardiorespiratory patients during acute ward-based admissions.
- Develop the clinical reasoning and skills to assess and manage various ward-based cardiorespiratory populations.
- Discuss the identification, assessment and escalation of high risk or deteriorating cardiorespiratory patients

The CRASH Course is designed for **early career physiotherapists** working in the acute hospital setting and **final year physiotherapy students**.

It is not an ICU course.

The course includes a comprehensive **10-hour eLearning** package and a **full day face to face course with simulations** with professional simulated patients and clinical reasoning and skills workshops.

The course is facilitated by cardiorespiratory and clinician education experts.

Who should attend?

Registered Physiotherapists who are **new graduates** or new to cardiorespiratory physiotherapy. Student physiotherapists preparing for **final year** acute placements are also welcome.

When and Where?

Monday 30th June 8:00am-4:30pm at Swinburne University of Technology, Hawthorn Campus. Approximately 10 hours of eLearning to be completed prior (with ongoing access for revision).

Cost?

\$650 early bird/student registration includes e-learning package and face-to-face programme (including morning tea, lunch and a barista made coffee/hot drink).

Prices rise to \$750 from 05/05/2025. Limited places (24) available.

Registrations Close: Friday 27th June or after 24 registrations

Enquires & Registration: <https://www.trybooking.com/DASDA>

Or contact physioclinicaleducators@austin.org.au or (03) 9496 3987



Programme Details:

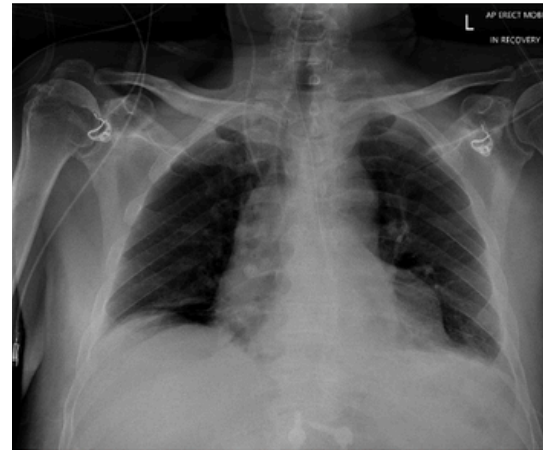
Theoretical component

This comprehensive self-directed learning package was created by professional learning designers and is delivered via an **interactive eLearning** format. The content is essential preparation for the practical component.

Participants should allow **at least 10 hours** to complete the eLearning package. The package consists of 8 modules detailing the assessment and management of ward-based patient populations and summarising current literature in these groups. The eLearning package can be returned to at any time for revision.

Content includes:

- Analgesia
- Oxygen Therapy
- Chest X-ray Interpretation
- Assessment of Cough
- Acute Exacerbation of COPD
- Blunt Chest Trauma
- The Surgical Patient (thoracic, cardiac and abdominal surgery populations)
- Ward-based Tracheostomy Management

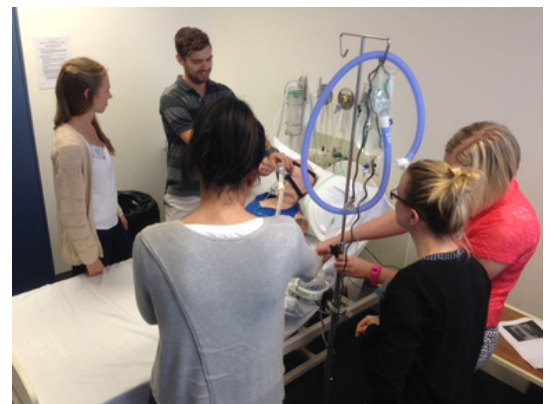


Practical component

Face-to-face attendance at a **full day program** with expert facilitators including case-based clinical reasoning workshops, simulation with **professional simulated patients** and practical skill development sessions.

Content includes:

- Management of Acute Exacerbation of COPD patients and airway clearance in this population (including simulation scenarios)
- Management of the postoperative thoracic, cardiac and abdominal surgical patients (including simulation scenarios)
- Management of blunt chest trauma patients
- Physiotherapy management of the tracheostomised ward patient
- Recognition and escalation of deterioration in the above patient populations



Enquires & Registration: <https://www.trybooking.com/DASDA>

Or contact physioclinicaleducators@austin.org.au or (03) 9496 3987

