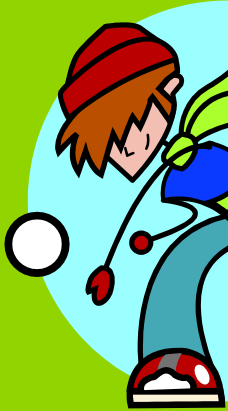


Many parents expect that their children will at some point demonstrate some challenging behaviour in class and/or at home, but that they will grow out of it and learn how to manage their behaviour. All children go through stages, but some may need help manage behaviour.

CASEA: CAMHS And Schools Early Action



Getting in early (Prep to Grade 2)

Research shows that getting in early is important in helping children who are having trouble working out how to manage their behaviour. Without help, these children may not do as well at school, may find it hard to fit in and make friends, and maintain a positive outlook. This may lead to difficulties later in life.

CAMHS and Schools Early Action Program (CASEA)

CASEA is a program which aims to get in early and help schools and families work with children who may exhibit some challenging behavior. The program was developed in consultation with the Department of Education and Early Childhood Development and the Catholic Education Office .

The Austin CAMHS CASEA team of experienced clinicians will work in partnership with parents, schools, teachers and children to improve children's behaviour early on, before the problems become more difficult to handle.



CASEA offers:



- Assessment for all children 5 to 8 years of age at your child's school to find those who may benefit from a group program.
- An 8 week group program for children identified with challenging behaviours.
- An 8 week group program for parents to help families manage difficult behaviours at home.
- Training for teachers to better understand and manage children's challenging behaviours.
- A written report for parents and teachers about how children participated in the group program and recommends ways to manage their behaviour in the future.
- Assistance with referrals to other services if needed.

CASEA aims:



- For children to display less challenging behaviours
- For parents and teachers to better understand and manage kids' challenging behaviours
- For the whole school community to better understand kids' difficult behaviours
- For services such as CAMHS, schools and families to work together to improve health and well-being outcomes for young children.



CAMHS and Schools Early Action (**CASEA**)
Level 1, South Wing, Centaur Building,
Heidelberg Repatriation Hospital
300 Waterdale Road, Heidelberg West 3081
T: 9496 2822 F: 9496 2063



Information for Parents

CASEA



**Early action
for positive social
and emotional
development**

