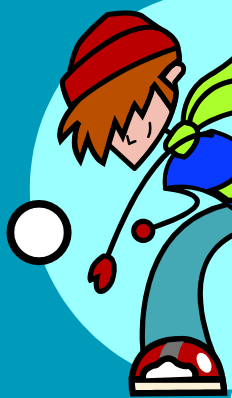


While many children go through stages of disruptive behaviour in class and/or at home, some children can develop ongoing difficulties, and, without help, these behaviours may not improve.

CASEA: CAMHS And Schools Early Action



Intervening early (Prep to Grade 2)

Research shows that intervening early is important for the effective treatment of children at risk of developing severe behavioural problems. Such problems can impact on a child's academic progress at school, affect their social and emotional development and can lead to negative effects later in their life.

CAMHS and Schools Early Action Program (CASEA)

CASEA is an early intervention program developed in consultation with Department of Education and Early Childhood Development and the Catholic Education Office. It aims to assist schools and families to work more effectively with children who are displaying challenging behaviors.

The Austin CAMHS CASEA team of experienced clinicians (e.g. psychologists, occupational therapists and social workers) works in partnership with schools, teachers, parents and children to improve children's behaviour early on, before the problems get out of control.

Primary schools in the Austin Health catchment can apply to have the Austin CASEA program at their school.



CASEA offers:



- Screening and assessment of all children 5 to 8 years of age, to identify those who may benefit from a group program.
- An 8 week group program for children identified with challenging behaviours.
- An 8 week parent group program to help families manage difficult behaviours at home.
- Professional development and training for teachers to improve understanding of challenging behaviours and assist in development of management strategies.
- A written report for parents and teachers regarding the child's participation in the group with recommendations for future behaviour management.
- Assistance with referral to other services as needed.

CASEA aims:



- For children to display less challenging behaviours.
- For parents and teachers to have an improved understanding of challenging behaviours and better management strategies.
- For the whole school community to have a better understanding of difficult behaviours.
- For services such as CAMHS, schools, local community agencies and families to work together to improve health and well-being outcomes for young children.



CAMHS and Schools Early Action (**CASEA**)
Level 1, South Wing, Centaur Building,
Heidelberg Repatriation Hospital
300 Waterdale Road, Heidelberg West 3081
T: 9496 2822 F: 9496 2063



Information for Schools

CASEA



**Early action
for positive social
and emotional
development**

